

Butterfly Life Cycle

Metamorphosis of a Monarch Butterfly

Black, yellow, orange,
and cream stripes



Larva = Caterpillar

The egg hatches into a tiny larva (caterpillar).



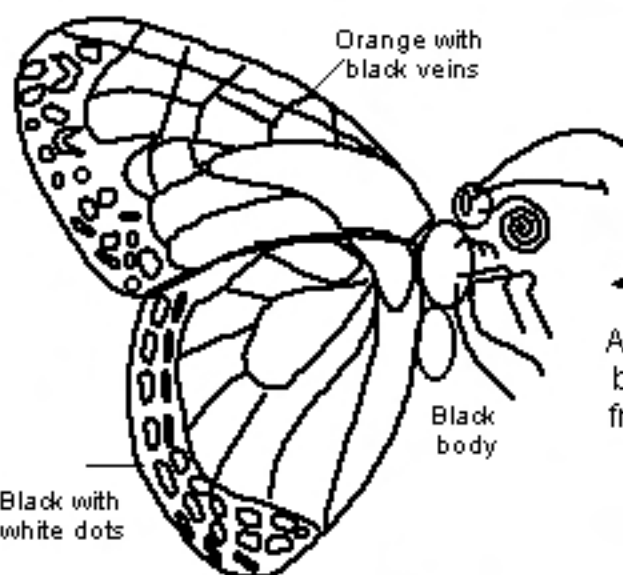
The caterpillar eats and grows a tremendous amount.



The adult female lays an egg that was fertilized by the male.

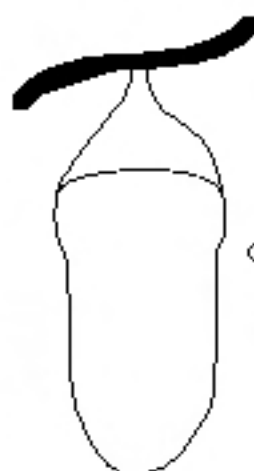


The caterpillar attaches itself to a twig and forms a hard outer shell.



Adult = Butterfly

Adults live for only a short time. They cannot eat; they only drink through their straw-like spiral proboscis. They will fly, mate, and reproduce.



Pupa = Chrysalis

Inside the pupa, the caterpillar changes into a butterfly. Pupae are often camouflaged to hide from predators.

A fully-grown adult butterfly emerges from the chrysalis.

Copyright © EnchantedLearning.com

This page may be printed for non-commercial educational uses only.

